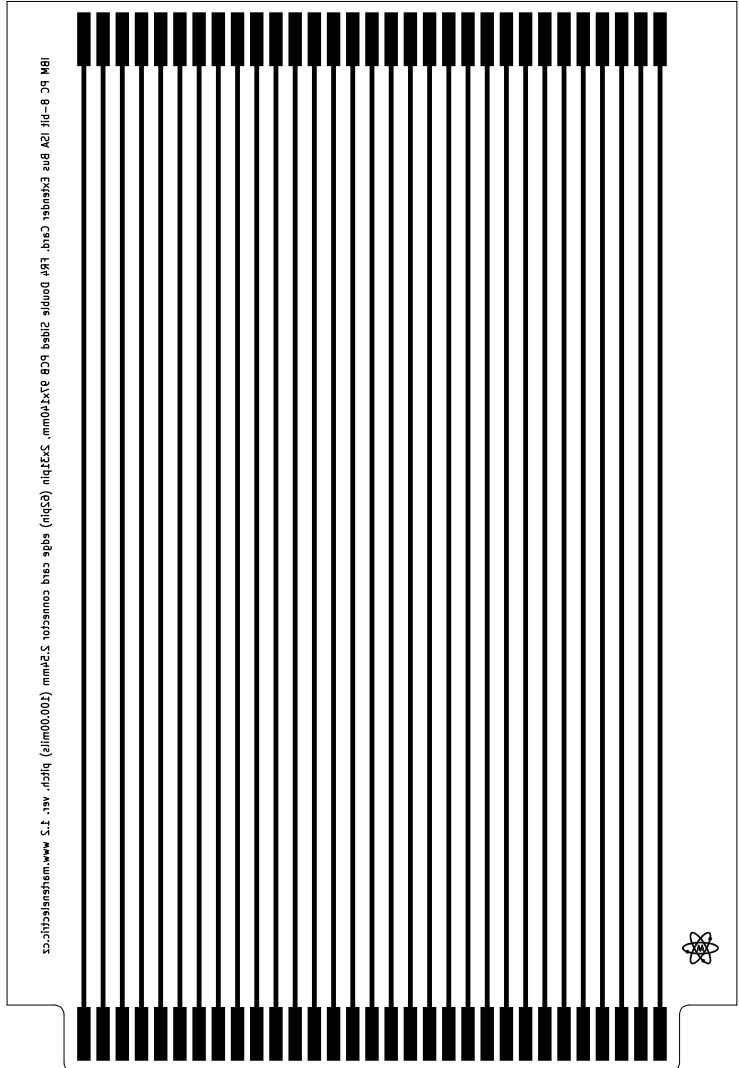


IBM PC 8-bit ISA Bus Extender Card. FR4 Double Sided PCB 97x140mm, 2x33pin (62pin) edge card connector 2.54mm (100.00mil) pitch, ver. 1.2 www.martenelectric.cz



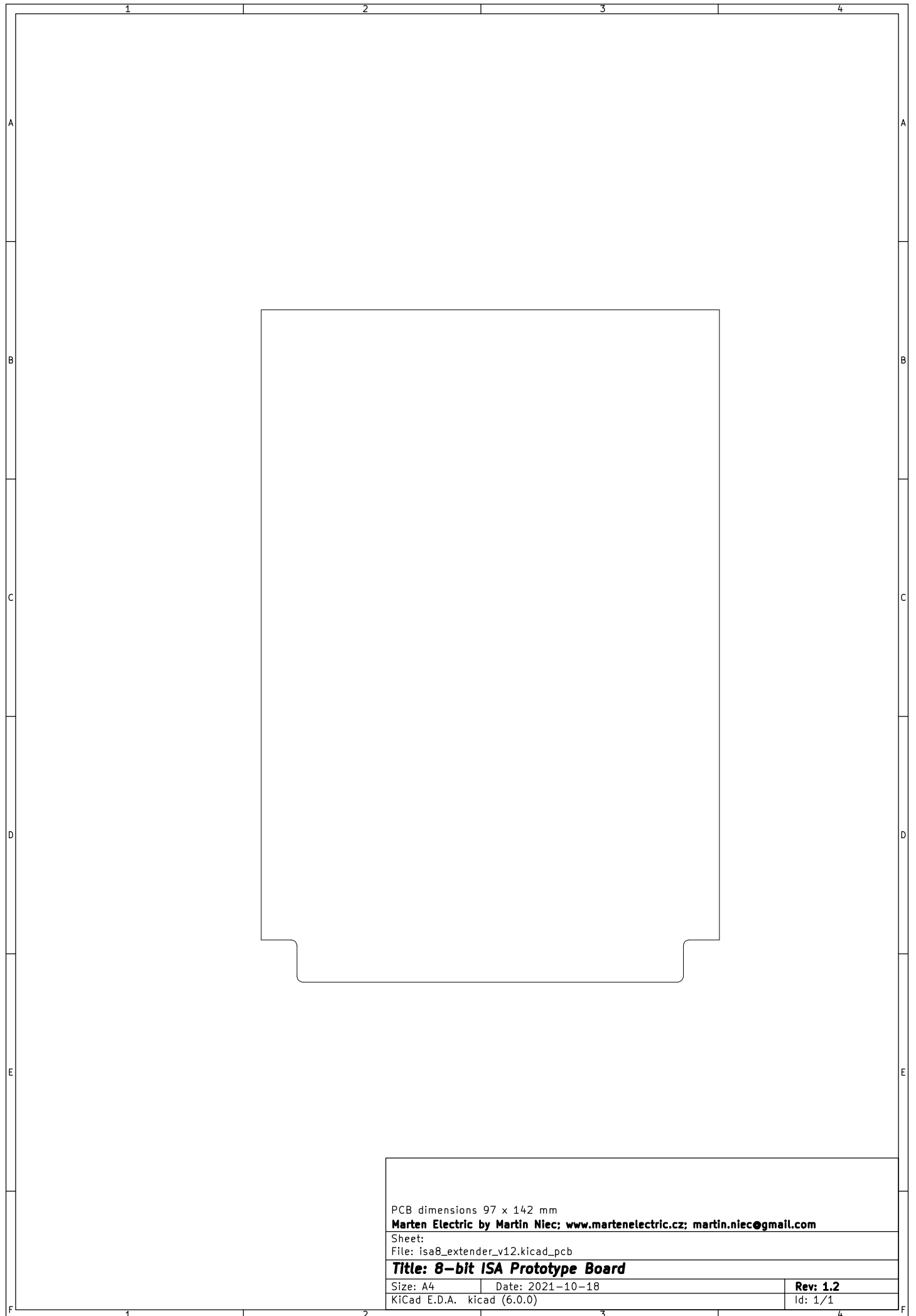
PCB dimensions 97 x 142 mm	
Marten Electric by Martin Niec; www.martenelectric.cz; martin.niec@gmail.com	
Sheet:	
File: isa8_extender_v12.kicad_pcb	
Title: 8-bit ISA Prototype Board	
Size: A4	Date: 2021-10-18
KiCad E.D.A. kicad (6.0.0)	Rev: 1.2
	Id: 1/1



IBM PC 8-bit ISA Bus Extender Card. EBN D0916 2164 PCB 24x70mm. 5x3pin (5S) edge card connector. 52mm (20000012) bicpr. rev. 1.3. www.martenelectric.cz



PCB dimensions 97 x 142 mm	
Marten Electric by Martin Niec; www.martenelectric.cz; martin.niec@gmail.com	
Sheet:	
File: isa8_extender_v12.kicad_pcb	
Title: 8-bit ISA Prototype Board	
Size: A4	Date: 2021-10-18
KiCad E.D.A. kicad (6.0.0)	Rev: 1.2
	Id: 1/1



PCB dimensions 97 x 142 mm

Marten Electric by Martin Niec; www.martenelectric.cz; martin.niec@gmail.com

Sheet:

File: isa8_extender_v12.kicad_pcb

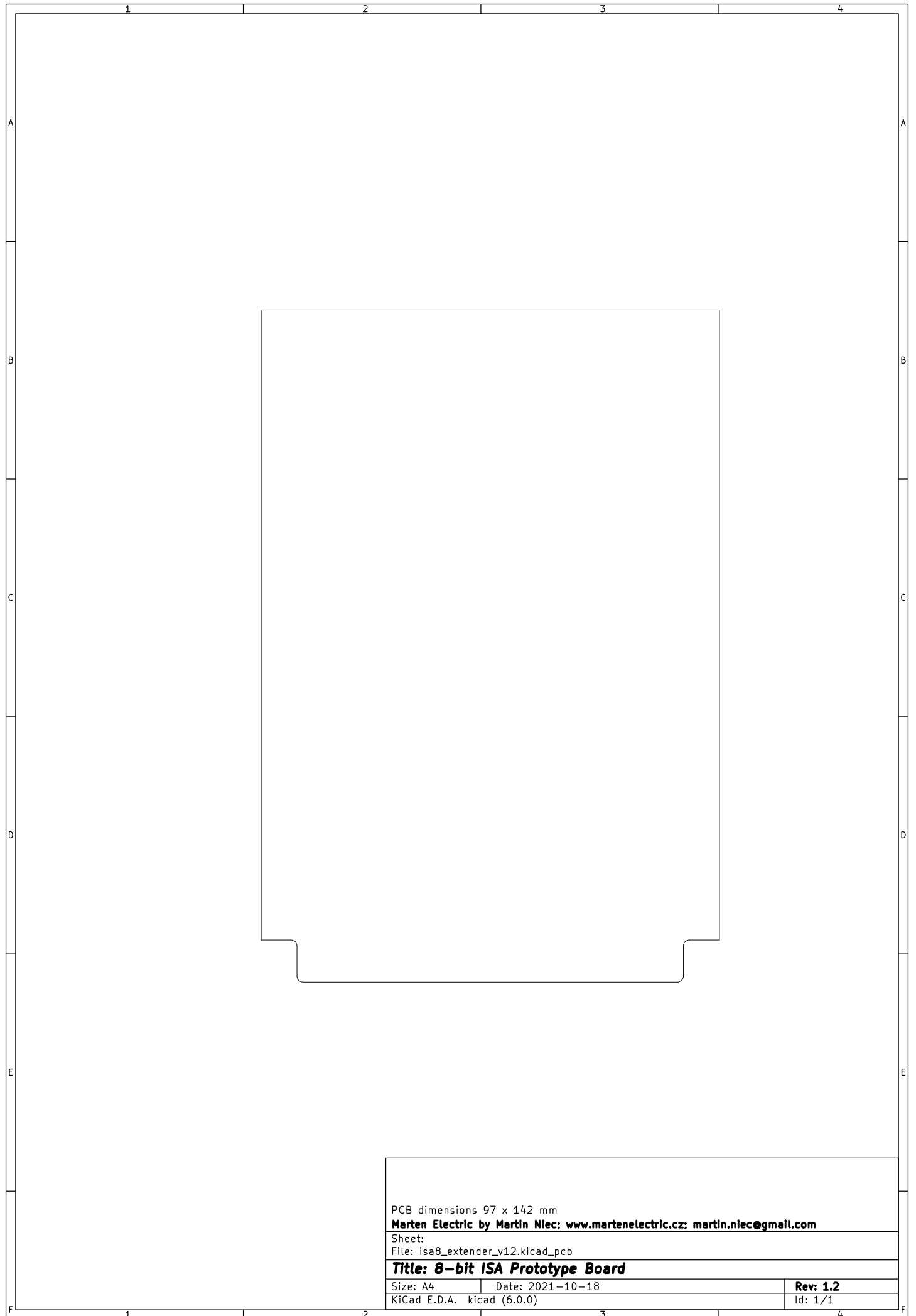
Title: 8-bit ISA Prototype Board

Size: A4 Date: 2021-10-18

KiCad E.D.A. kicad (6.0.0)

Rev: 1.2

Id: 1/1



PCB dimensions 97 x 142 mm

Marten Electric by Martin Niec; www.martenelectric.cz; martin.niec@gmail.com

Sheet:

File: isa8_extender_v12.kicad_pcb

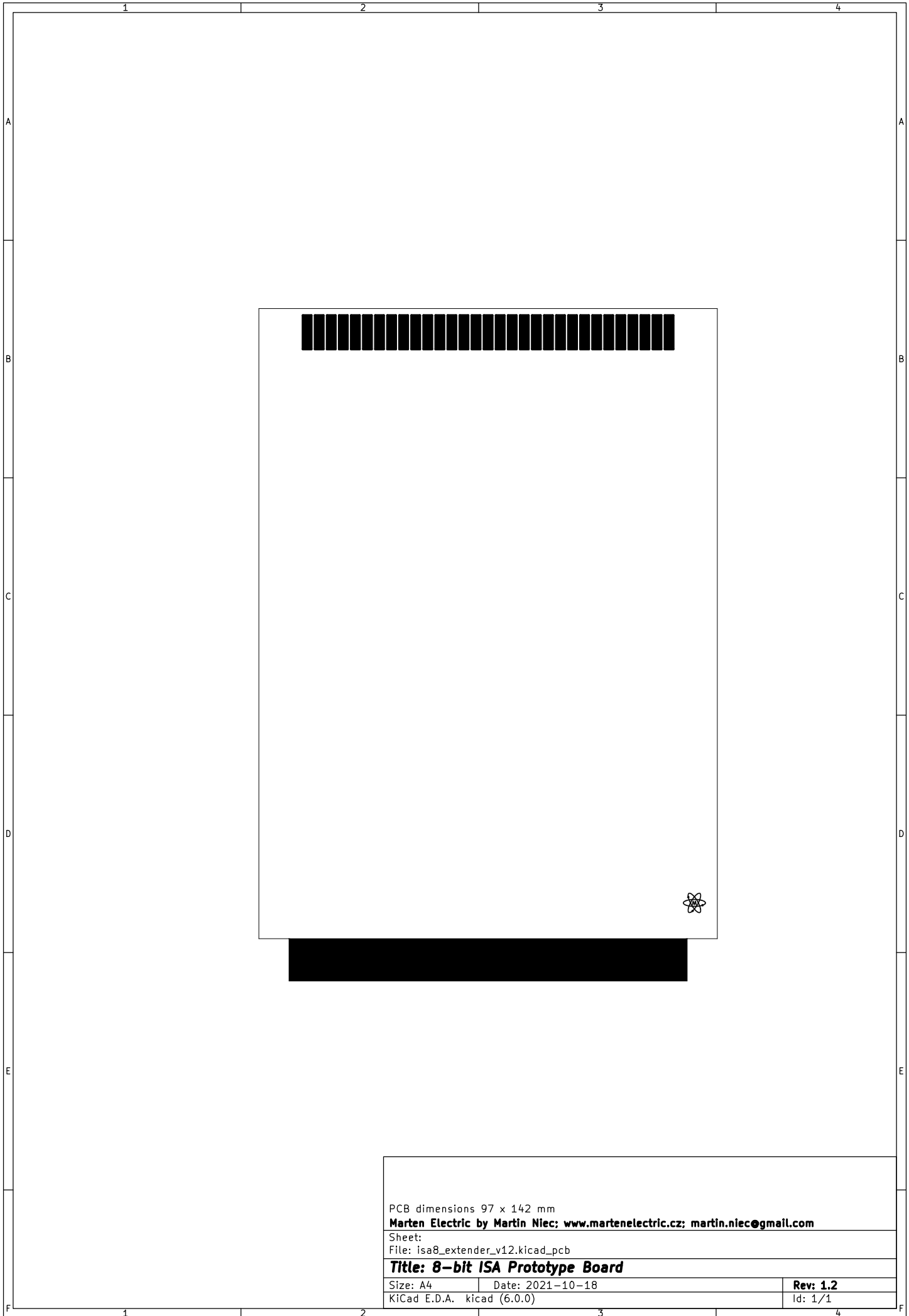
Title: 8-bit ISA Prototype Board

Size: A4 Date: 2021-10-18

KiCad E.D.A. kicad (6.0.0)

Rev: 1.2

Id: 1/1



PCB dimensions 97 x 142 mm

Marten Electric by Martin Niec; www.martenelectric.cz; martin.niec@gmail.com

Sheet:

File: isa8_extender_v12.kicad_pcb

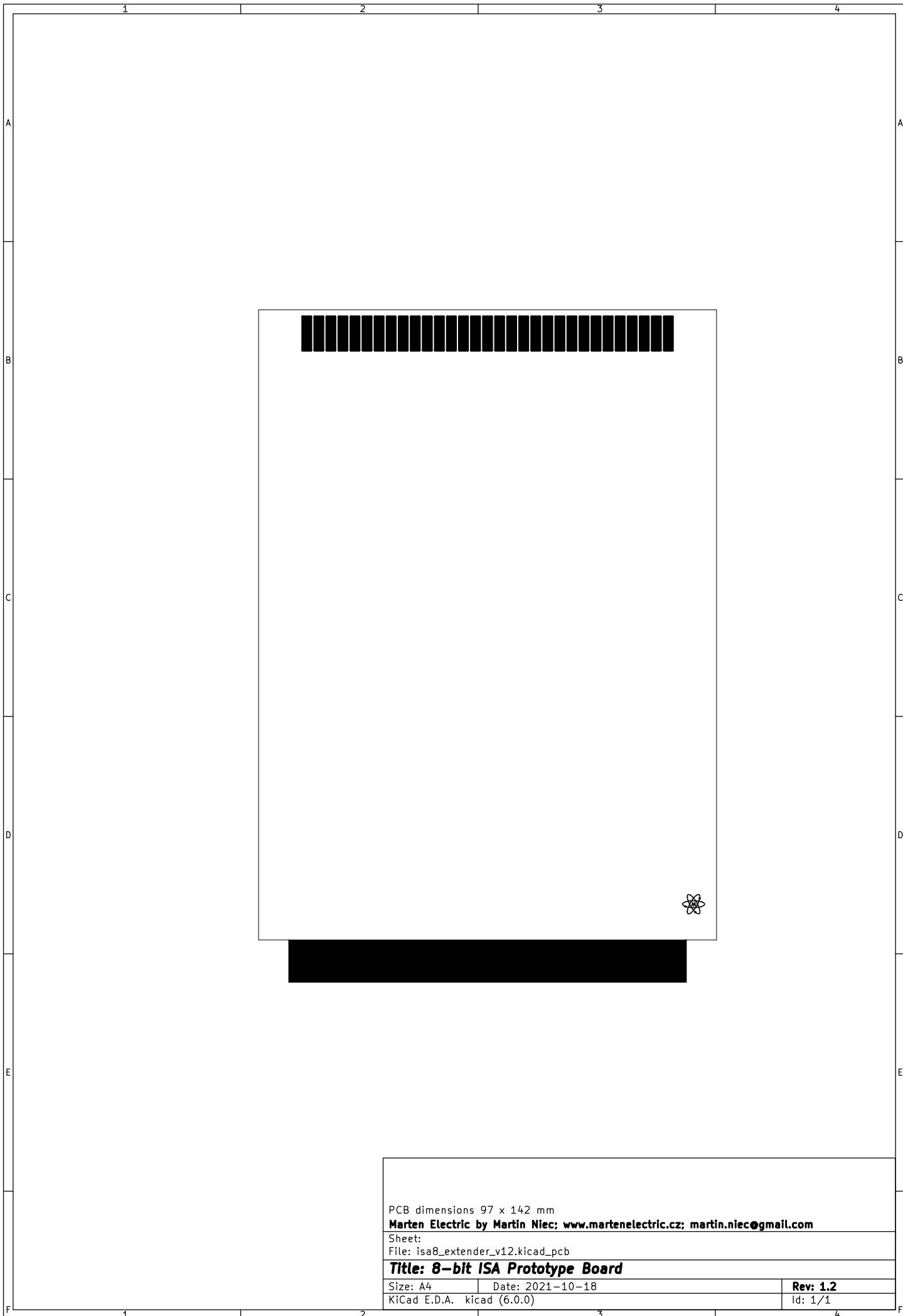
Title: 8-bit ISA Prototype Board

Size: A4 Date: 2021-10-18

KiCad E.D.A. kicad (6.0.0)

Rev: 1.2

Id: 1/1



PCB dimensions 97 x 142 mm

Marten Electric by Martin Niec; www.martenelectric.cz; martin.niec@gmail.com

Sheet:

File: isa8_extender_v12.kicad_pcb

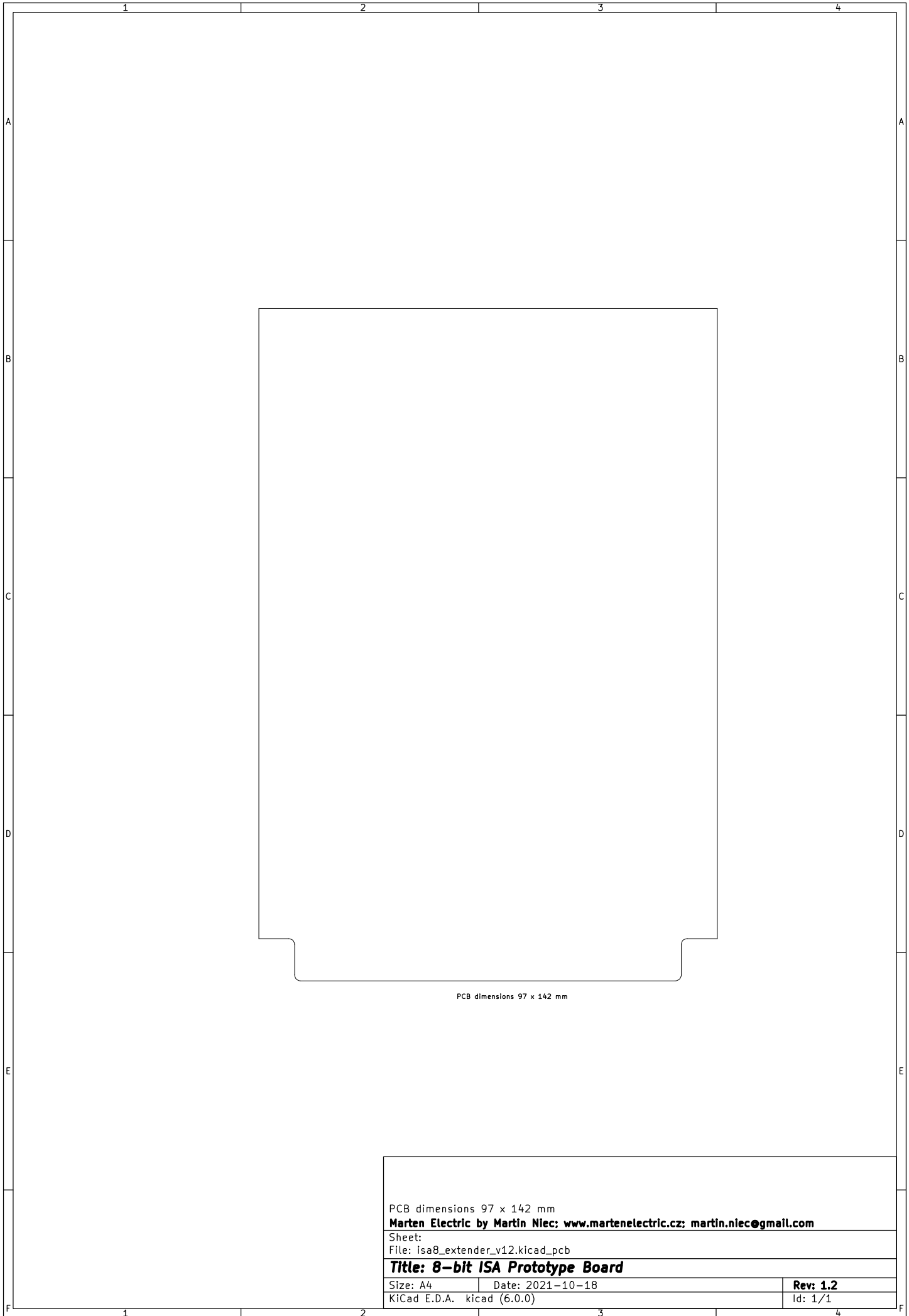
Title: 8-bit ISA Prototype Board

Size: A4 Date: 2021-10-18

KiCad E.D.A. kicad (6.0.0)

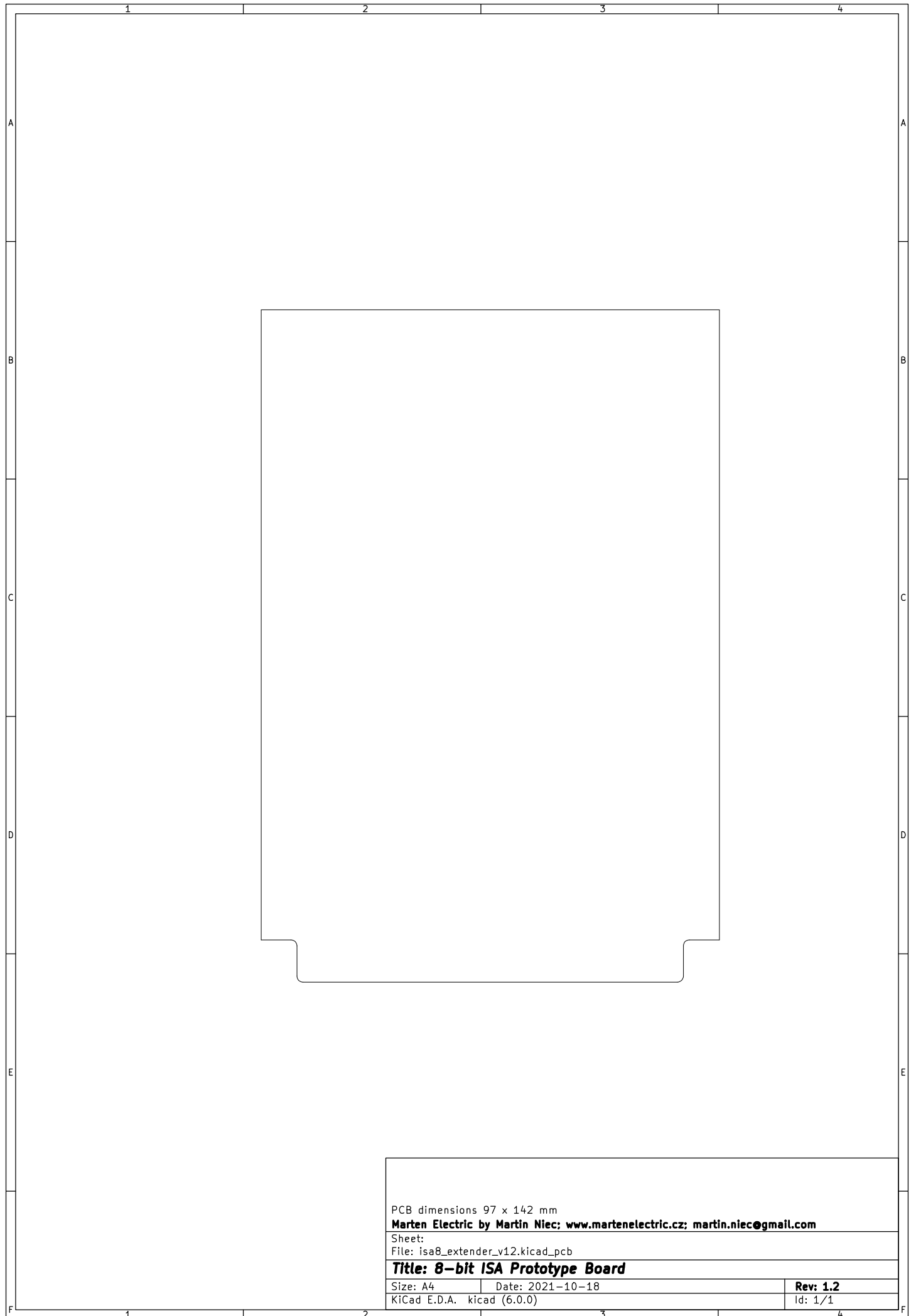
Rev: 1.2

Id: 1/1



PCB dimensions 97 x 142 mm

PCB dimensions 97 x 142 mm	
Marten Electric by Martin Niec; www.martenelectric.cz; martin.niec@gmail.com	
Sheet:	
File: isa8_extender_v12.kicad_pcb	
Title: 8-bit ISA Prototype Board	
Size: A4	Date: 2021-10-18
KiCad E.D.A. kicad (6.0.0)	Rev: 1.2
	Id: 1/1



PCB dimensions 97 x 142 mm

Marten Electric by Martin Niec; www.martenelectric.cz; martin.niec@gmail.com

Sheet:

File: isa8_extender_v12.kicad_pcb

Title: 8-bit ISA Prototype Board

Size: A4 Date: 2021-10-18

KiCad E.D.A. kicad (6.0.0)

Rev: 1.2

Id: 1/1